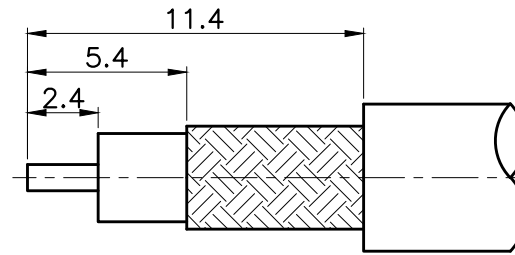
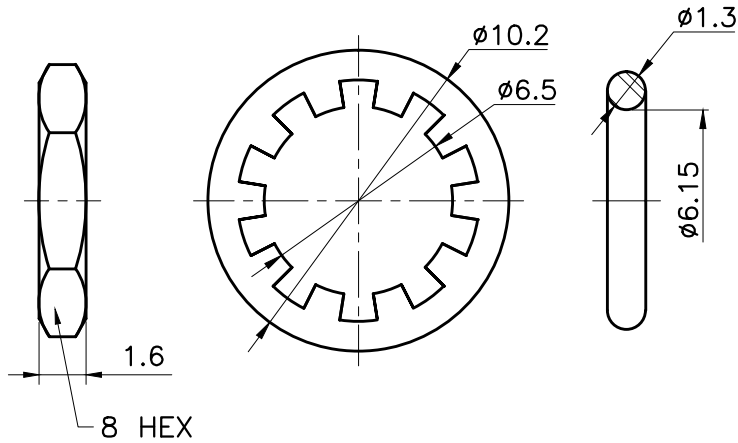


REVISIONS		
ISS	DESCRIPTION	DATE

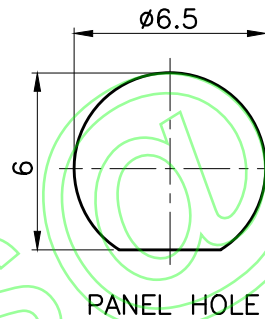
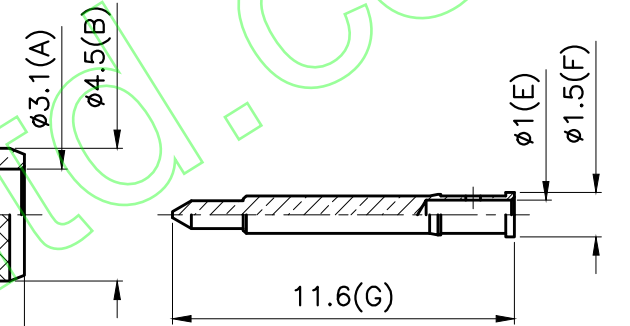
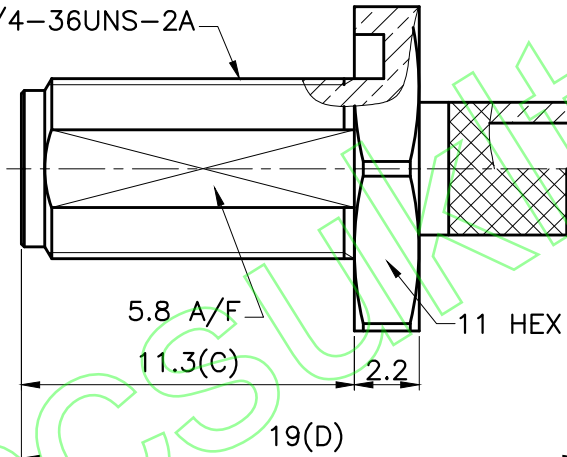
RoHS COMPLIANT



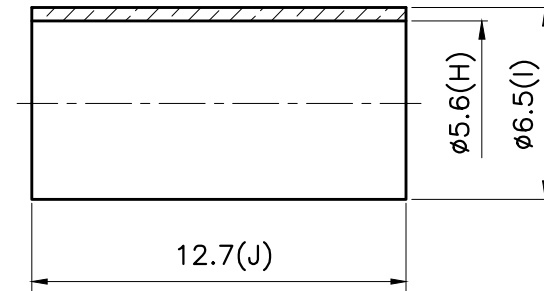
RECOMMENDED
CABLE STRIPPING DIM'S



1/4-36UNS-2A



1. CRIMPED FERRULE
HEX CRIMP SIZE .217"
2. CONTACT PIN TO SOLDER



CONNECTORS CABLES



SPECIALISTS LTD.

TITLE: RP SMA FEMALE BULKHEAD CRIMP
(FOR RG58/U)

PART NO: SMABJCR58R

055

DATE: 03/26/15"

UNIT: mm

DRAWING NO:

SHEET: .

SCALE: 4/1

APRD:	UNLESS OTHERWISE SPECIFIED TOLERANCES 0.5-6 = ±0.2 >6-30 = ±0.4 >30-120 = ±0.6 >120-315 = ±1 >315-1000 = ±1.6 ANGLES = ±5°	NUT	BRASS	GOLD
CHKD:		WASHER	BRASS	GOLD
DR:		FERRULE	BRASS	GOLD
		O RING	SILICONE	BLACK
		INSULATOR	TEFLON	WHITE
		CONTACT PIN	BRASS	GOLD
		BODY	BRASS	GOLD
		NO. DESCRIPTION	MATERIAL	FINISH